

<http://nepioneer.com>

December 2015 Membership Invitation

We are pleased to hear of the current opportunity for Library Improvement Grant funding through the Nebraska Library Commission, and excited that funding to help libraries join the statewide Pioneer Consortium will receive priority consideration as grant applications are evaluated. We are extremely grateful for the continued support of the Nebraska Library Commission as shown in Goal 2, Activity 7 of the Commission's Library Services and Technology Act Five-Year Plan 2013 - 2017.

Maybe you've heard of our consortium and wondered about its usefulness to your library. Just like any other pioneers, we can tell you that a lot of progress has been made since "the old days", that our ILS (integrated library system) has improved considerably just in the past year, and we are on a firm path for an even better future.

The "old days" for us started in 2008 with librarians wanting to learn more about open source ILS opportunities making their way onto the plains from exotic locales such as New Zealand.

A few of us ultimately decided to be pioneers in this effort and with the help of major IMLS federal grant funding through the Nebraska Library Commission, we explored different open source solutions and chose Koha. We formed a Joint Entity (similar to an interlocal agreement) through Nebraska state law and city council approval.

Instead of downloading the free community software and spending the time and money to install, host, maintain and continually improve it ourselves, we contracted with the vendor Liblime (PTFS) to do it while still saving a considerable amount of money compared to what was previously being paid to proprietary ILS vendors with their license fees.

Over time, other Nebraska libraries have become Pioneers and membership currently includes 21 public libraries and one community college library. We encourage you to take a look at joining the Pioneer Consortium at this time through grant funding.

Some benefits of Pioneer Consortium Membership

- ◆ Pioneer is not a vendor. We are a statewide library development partner with the Nebraska Library Commission. The Pioneer Consortium's purpose is to enrich the collections, share the resources, enhance the services, and strengthen support for its Member Libraries.
- ◆ By joining Pioneer via our Joint Entity agreement, you'll join a network of Nebraska publicly funded libraries to provide access to the union catalog of all Member Libraries. We've developed free open source software into a feature-rich integrated library system (ILS) for each Member Library.
- ◆ As our consortium matures, we will expand our activities to allow patrons from Member Libraries to request needed materials; enhance cooperative electronic and physical document delivery of materials; provide access to electronic resources other than the union catalog; and support cooperative collection development activities.

- ◆ The Pioneer Consortium has worked hard in the past year to forge a stronger relationship with other Liblime consortia across the United States. By pooling our development resources and Liblime’s expertise, everyone benefits as needed improvements are implemented much faster than we had experienced with more expensive proprietary ILS vendors.
- ◆ A major project for our consortia in the coming year will be sponsored developments to merge the public and academic sides of Liblime Koha and the transition to a major upgrade to Bibliovation. Information is attached about this future development.
- ◆ You will have no need for an in-library server as Liblime hosts for us.
- ◆ Data migration will be professionally managed by Liblime and includes: bibliographic records, item/copy records, holdings records, authority records, patron records, and current circulation transactions covering fines/fees/holds/current status.
- ◆ Liblime takes care of backups, upgrades, bug fixes, server management.
- ◆ The Pioneer Consortium has Koha running in a “production” side for daily activities and in a “sandbox” side for training and testing.
- ◆ Liblime operates a Customer Support Center with web portal interface for placing new requests, tracking existing requests, and researching FAQs.
- ◆ The Pioneer Consortium has its own Technical Committee to be “Point of Contact (POC)” with Liblime’s Customer Support Center. Your questions would either be handled directly by our Technical Committee or routed to Liblime for resolution on your behalf.

The most advanced open development ILS available today

Full range of faceted searching capabilities	Full cataloging module with RDA support
OPAC “skin” can be tailored for each Pioneer member	Batch edit tool for managing groups of patron or item records
Patron OPAC holds, renewals, lists, tagging, account data and reading history options	Item record and patron record ownership support for our consortium
Email checkout/checkin receipts, return reminders, overdue notices	Centrally-managed serials prediction and checkin support
Full circ functionality—blocks and overrides, fast adds, search to hold, batch renewal, etc.	Acquisitions module supports selection, ordering, receiving, invoicing, budget, EDI
Batch loading of bib records, authority records, and patron records	These and other robust features are explained in greater detail in the attachments

All this at a very affordable price

We invite you to take a look at our membership page at <http://nepioneer.com/membership> for information about this low cost ILS investment, application requirements, and a cost estimator to help you approximate your library’s costs to be part of Pioneer. Be aware that In early January 2016 the Pioneer Executive Committee will be discussing an increase to the first year maintenance fee. This may affect your costs and so be sure to contact Steve Fosselman, Pioneer Business Agent, 308-385-5333, sf@gi.lib.ne.us. You can contact poc@nepioneer.com for answers to your technical questions and mcomm@nepioneer.com for membership-related questions. We look forward to hearing from you!

Discover LibLime Koha™

LibLime Koha™ is the most advanced open development Integrated Library System (ILS) available today. Designed by librarians representing all types of libraries (public, school, public consortia, special, corporate, school district, seminary, and medical) with collections ranging from one hundred thousand items to over three million items, LibLime Koha™ is a fully functional, ever-evolving, next generation ILS.

◉ LibLime Koha™ is the Premier Open Development ILS

- Librarians enhance the application to support their workflow needs
- Agile development processes allow for several production releases each year
- Operating in a Plack environment for persistent runtime, the performance of LibLime Koha™ supports circulation transactions that complete in less than 1/3 of a second
- Relying on the Lucene Solr search engine, indexing takes place in real time

◉ LibLime Koha™ Public Service Features

- Faceted searches for topics, authors, locations, formats, and geographic designations
- Support for book clubs and selected reading groups
- Individual OPAC 'skins' for each library in a union catalog
- Patron OPAC accounts support holds (includes suspend and reactivate holds functionality), renewals, lists, tagging, purchase & ILL requests, access to current fines/fees/account data and reading history retention
- Partial payment of fines per item
- Book drop support
- Comprehensive search results delivered by Lucene Solr search engine
- Upon check out, provide patrons a record of all materials loaned via email
- A wide range of permissions allow for the creation of a variety of staff accounts with varying privileges and responsibilities
- Circulate checked-out materials in a single key stroke
- Full circulation functionality such as staff defined blocks and overrides, 'fast adds' to create quick bib records for immediate use, search to hold, batch renewal

◉ LibLime Koha™ Technical Service Features

- Utilizes the MySQL RDBMS
- Data exports to third party debt collection agencies
- Tools for batch loading of bibliographic records, authority records, and patron records with full RDA support
- Item record ownership and patron record ownership support for consortial union catalogs
- Batch edit tool for managing groups of patron or item records
- Easy-to-use circulation policy matrix
- Advanced messaging options support electronic communication for overdues, holds, courtesy notices, and order requests
- Centrally-managed prediction and check in support for serials in a centralized procurement environment
- Enterprise-wide acquisition features via EDI-compliant LibLime GetIt™ acquisitions application supports selection, ordering, receiving, and invoicing
- Multi-tiered fund structure for granular budget control and reporting
- Creates bibliographic record and item records in the LibLime Koha™ database from the purchase order

- ▶ **100% Web-Based ILS**
Library staff, system administrators, and researchers access through a web browser
- ▶ **Next Generation Digital Library System (ArchivalWare DLS™) Integration**
Bibliographic and digital collection development tools in a single application
- ▶ **Cloud Computing SaaS Platform**
Completely hosted solution with no software or hardware procurement required
- ▶ **Enterprise Acquisition and Cataloging Functionality**
Enhanced workflow tools for Technical Services
- ▶ **Scalable Open Source Consortial Solution**
Flexible circulation policy matrices support consortial resource sharing
- ▶ **User Driven Development**
Libraries worldwide control development of their toolset
- ▶ **Flexible and Cost Effective**
Fits any library's needs at a price they can afford
- ▶ **On/Off Switches**
At a system preference level libraries choose the functionality to support their policies
- ▶ **Mirrored Instance**
Every hosted library has two ILS instances, one for production and one for testing and training
- ▶ **Fully Developed**
All major modules are supported in production
- ▶ **Open Relational Database**
Can use any third party report writer to access data and create custom reports, as all data is fully accessible for reporting and exporting from the MySQL RDBMS
- ▶ **Z39.50 Compliant**
Full support for MARC21 import

Visit www.liblime.com/demos for a free demo of the application

Rely on Our Solid Foundation for Your Success

LibLime, a Division of PTFS is the world's largest provider of support and development services for LibLime Koha™ and LibLime Academic Koha™. Both LibLime Koha™ and LibLime Academic Koha™ are completely web-based solutions for library staff, systems librarians, and library users. LibLime hosts the database for libraries using a cost-effective distributed computing cloud platform.

► Consulting

- LibLime librarians and technical business analysts partner with libraries to help define additional functionality for LibLime applications
- Comparative software analyses of LibLime open-development functionality and proprietary ILS application
- Design specifications for new open-development functionality
- Design specification for enhancing existing LibLime Koha™ functionality

► Implementation

- Installation (includes Debian OS, MySQL RDBMS, web server, Plack, Solr, and ILS application)
- Dedicated project managers to guide the implementation process
- System level configuration (selecting from hundreds of system preference options)
- Module level configuration (permissions, policies, privileges, and import settings)
- Migration of data from legacy system – bibliographic, item, patron, authority, and circulation transaction records
- Merge and de-duplicate disparate databases to build union catalogs
- Full application training provided via web-based sessions

► Development

- Perl, Java, Javascript, CGI, XSLT, and HTML programming expertise
- New functionality development
- Enhance existing functionality
- Design specifications, release notes, and user documentation services
- Feature design testing, feature regression testing, and user testing of development features prior to release

► Customer Support and Hosting

- Hosting services supported in a distributed computing cloud hosting platform which offers unparalleled redundancy, reliability, and security
- Customer support available via customer web portal
- Daily full system backups stored in the cloud with logical data backups every five hours
- Cloud configuration applies computing resources at point of need during heavy system use
- Every hosted library has multiple instances – a production instance for the library's activities; a test or 'sandbox' instance for ongoing testing and training; and a replicated database updated in real-time for reporting

Explore Live LibLime Koha™ Sites

► Special

National Science Foundation: <http://nsf.ptfsinc.com>
The Design Institute of San Diego: <http://disd.kohalibrary.com>
Mount Vernon Estate, Museum & Gardens: <http://mv.ptfsinc.com>
National Associations of Realtors: <http://realtors.kohalibrary.com>
Terra Foundation for American Art: <http://tffa.kohalibrary.com>

► Consortia

Colorado Library Consortium: <http://ascc.kohalibrary.com>
South Central Library System: <http://scls.kohalibrary.com>
Pioneer Library Consortium: <http://pioneer.kohalibrary.com>

► School

The Cate School: <http://cate.kohalibrary.com>
Oyster River School District: <http://orsd.kohalibrary.com>
Regis Jesuit High School Library: <http://www.regisjesuit.com/library>
Rocky View School District: <http://rockyview.kohalibrary.com>
Athens Independent School District: <http://asdl.kohalibrary.com>

► Public

Salina Public Library: <http://salpublib.kohalibrary.com>
Derby Public Library <http://derby.kohalibrary.com/>
Jackson Memorial Library <http://jml.kohalibrary.com/>
Walpole Public Library: <http://walpole.kohalibrary.com>
Ferguson Library: <http://ferguson.kohalibrary.com>

► Academic

Ramapo College of New Jersey <http://ramapo.waldo.kohalibrary.com/>
Bank Street College of Education: <http://catalog.bankstreet.edu>
Sterling College: <http://sterling.kohalibrary.com>
Northwest Arkansas Community College: <http://nwacc.kohalibrary.com>
University of Hartford: <http://hartford.waldo.kohalibrary.com>

Visit www.liblime.com/demos for a free demo of the application

Bibliovation™



“Bibliovation™ functionality and intuitiveness are light years ahead of the system we are replacing.”

– An Intelligence Community Federal Government Librarian

No longer bound by physical barriers, libraries are now challenged to keep pace with vast amounts of digital information, alongside the traditional print collections. Since 1995, LibLime-PTFS has been at the forefront of providing library management software solutions. Our librarians, software engineers and information technologists work closely with our customers to create the best workflow solutions.

Library Industry Challenges

- **Multiple silos of data**—Information has been created, formatted and stored in many forms: microform, newsletters, journals, and books. Now, digital resources compete with print materials for the researcher's attention. All resources and formats require efficient location and searching with relevant results returned.
- **Proprietary control of tools**—Libraries can no longer rely on closed technological dead end systems, completely dependent upon on a single vendor's solution. In an age of increased technological openness, libraries must be able to connect disparate systems easily for a best-of-breed solution.
- **Strained budget requirements**—Technology in libraries is designed to streamline and reduce costs for the entire system. However, with increasing strains on funding, libraries need a measurable way to show that their investments are the best value solutions for their patrons and staff.

Bibliovation

- **Bridging results**—Bibliovation's Discovery Layer provides a solution to locate, search and organize results containing electronic content, eBooks and other digital formats, while preserving easy access to more traditional print materials and physical assets.
- **A proven open development platform**—Bibliovation 'future-proofs' the library by providing 'plug and play' functionality that allows the library to seamlessly deploy the best tools available to support its workflows.
- **Web services hosting**—Bibliovation is installed in a distributed computing hosting facility designed to funnel computing resources to point of need. The facility is SAS 70 and ISO 270001 security certified. We have been hosting library management systems for over eight years. This hosting offering is tailored to allow the library to divert current IT/hardware resources to collection development.



Library Experience

For over 20 years, PTFS-LibLime has provided award winning library software and service solutions to public, academic and special libraries with an emphasis on IT-free hosting solutions. LibLime-PTFS employs librarians and technologists who understand library workflows and the challenges librarians face juggling emergent data sources with external applications, such as proprietary databases, educational technology systems, ASRS applications, and accounting information programs. Components of the Bibliovation platform are currently in production at more than 600 libraries nationwide. Customers include:

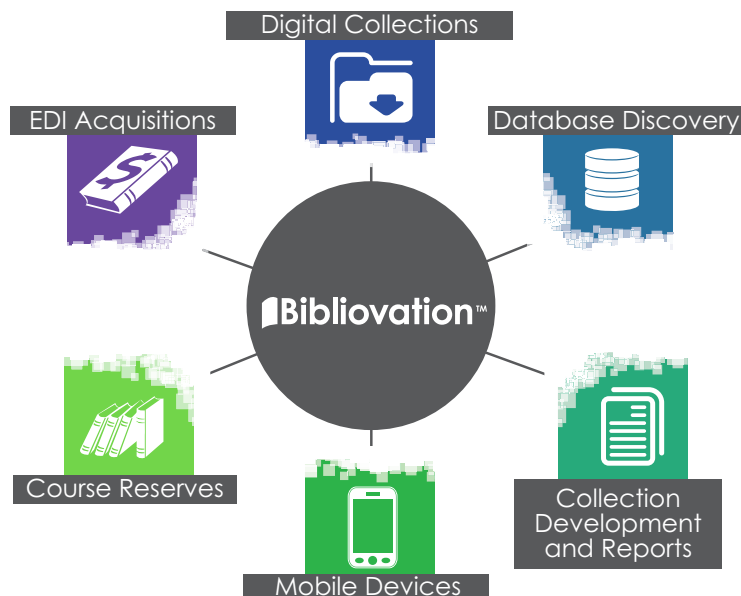
- Westchester Academic Library Directors Organization (WALDO) Libraries
- South Central Library Consortium
- DoD Libraries
- Pioneer Library Consortium
- National Science Foundation
- U. S. Fire Administration
- Wyoming State Library Digital Collections
- Carnegie Mellon University University Libraries, Digital Collections
- Utah State Library's Utah Government Digital Library
- Southern Oregon University's Digital Archives
- Whittier Public Library Digital Archives

Our implementation team provides superior services related to data migration, union catalog creation, onsite and web-based training, PMP-certified project management, and complete system configuration. We have successfully migrated customers from a variety of legacy proprietary systems, including Voyager, Horizon, Destiny, Unicorn, Dynix Classic, Symphony, EOS Web, and Millenium. Our team consists of veterans of the library industry who have brought their experience at programming, implementing, training, and supporting multiple legacy systems to the Bibliovation platform.

About LibLime-PTFS

LibLime, a division of PTFS, is the pioneer of web-based, cloud-hosted library management services. Our Library Services Platform, Bibliovation, combines traditional bibliographic management services along with support for GEOMARC, RDA, digital content searching, and visual retrieval. Working closely with our library customers, we are able to provide the most relevant technology tools in the Bibliovation platform – a solution built **By Librarians For Librarians**.

Get the Power.



Connect with us

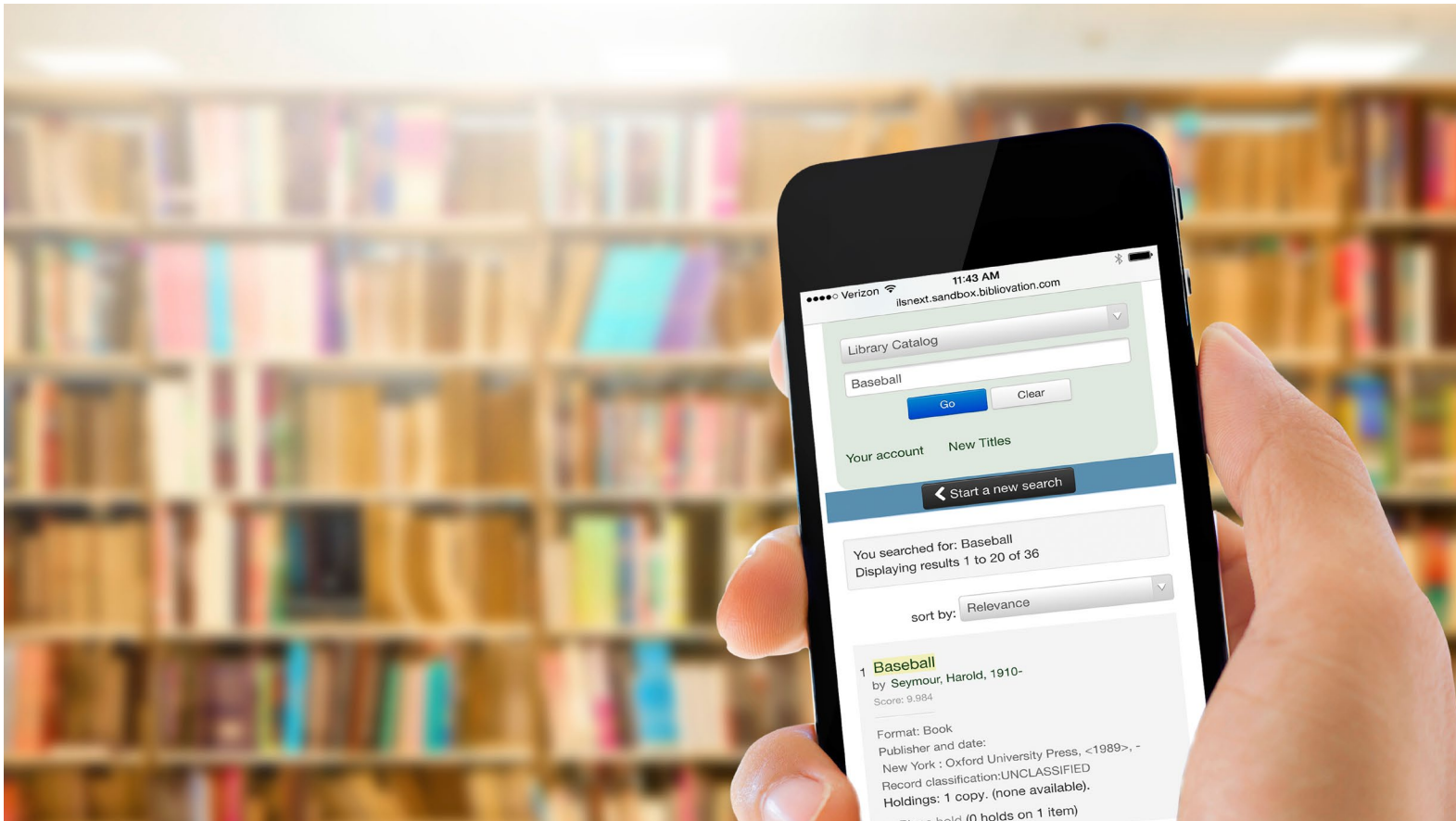


11501 Huff Court
North Bethesda, MD 20895
(301) 654-8088

www.liblime.com



Bibliovation™



“Bibliovation™ functionality and intuitiveness are light years ahead of the system we are replacing.”

– An Intelligence Community Federal Government Librarian

One simple to use, powerful search tool that reaches your library's full universe of physical and digital assets to retrieve relevant search results. The user experience changes from the frustration of multiple database searches with different search rules and different search results lists, to the satisfaction of a single search that combines relevant results from unified indexes, independent databases, library catalogs, and local digital collections.

Bibliovation at a Glance

Overview

The Bibliovation Library Services Platform (LSP) is a highly flexible, unified software system offered as a SaaS solution. The platform is completely web-based, providing mobile access from all devices. Bibliovation uses relational databases storing all data types, including bibliographic, patron, transaction, acquisitions and digital objects. By design, Bibliovation is highly customizable to support a variety of different library workflows. Users can select individual system components (i.e., Acquisitions and Discovery Layer to be used only to complement an existing ILS), or the entire suite of services can be provided to create the complete platform. MARC records, as well as other flexible metadata formats, are created as part of the digital object import process.

How Bibliovation Works

Our customers include librarians from many different backgrounds – they have different workflows, different missions, different user communities, and different external resources. LibLime-PTFS works closely with individual or groups of sites to develop requirements for new functionality or enhancements to existing functionality. The librarians participate in all steps of the design process -- feature identification, design description, specification approval, alpha testing, beta testing, and final production deployment. Bibliovation has been developed by librarians for librarians as an open development platform with a very active user community. This process is better than the closed proprietary model used for the last 30 years. **Designed By Librarians and Used By Librarians!**

Bibliovation

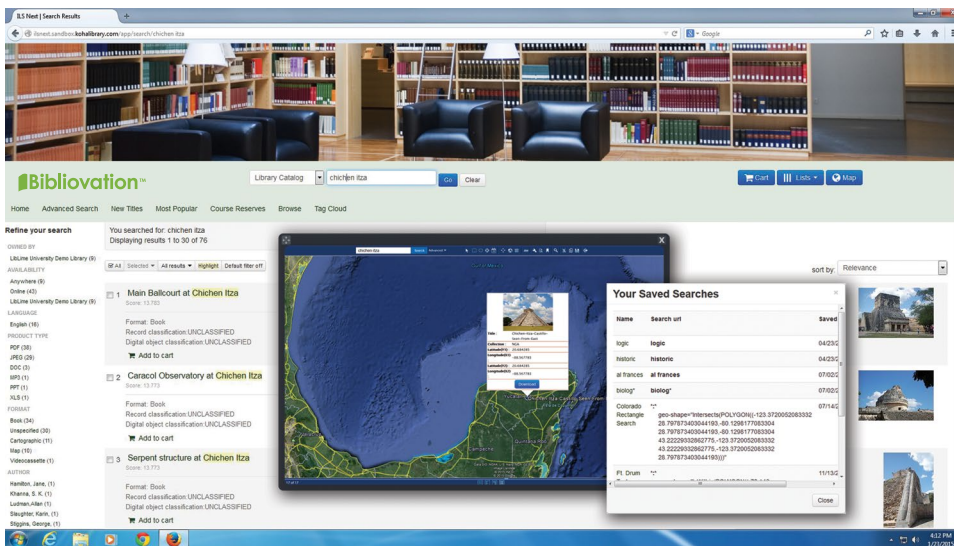
Tools and Functionality

Unique features and benefits of Bibliovation include:

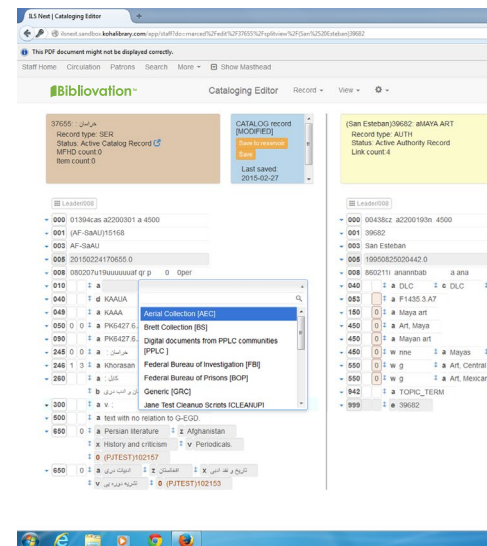
API Driven Discovery Layer

- Intuitive and powerful Keyword searching with relevancy ranking for accurate search results
- Visual map based searching as well as traditional Browse-style searching
- Dynamic and rich contextual faceted search options
- Enriched content support, and eBook integration
- ESRI and Google Earth search interfaces
- Full-text searching of digital objects
- Multi-language search translation

- ILL requests, purchase requests, and reference requests
- Saved searches and alerts for new materials
- Record tagging, ratings, reviews and personal List creation
- Self-checkout and Self-renewal
- Digital object downloads
- Mobile device support
- Suspend/reactivate holds, recall materials and e-call slips



API driven Discovery Layer



MARC21-based

Additional Bibliovention features include:

Circulation

- 'Green' holds algorithm
- Patron record ownership for union catalogs
- Agency based multiple circulation policies for union catalogs
- Patron messaging options (RSS feeds, email, lists and pop-ups)
- Course reserves
- Parent/child record relationships with support for proxy borrowing
- LDAP/ registrar services / automatic patron record creation
- ILL request tracker, holds management with pass/trace for union catalogs
- Batch delete of unused patron records
- Message creation dashboard

MARC21-based cataloging editor

- Full MARC21 support and record templates for bibs, authorities and holdings
- LC MARC21 validation rules with Support for local cataloging rules (with embedded local validation)
- Record cloning and multiple record display
- Batch delete/edit with support for cut/paste between records
- Authority control for multiple thesauri
- Z39 search from cataloging editor
- Reservoir workspace
- Batch import with matching profiles and data field deletion
- Digital object import
- Site-defined terminology picklists applicable throughout the MARC record

Periodicals

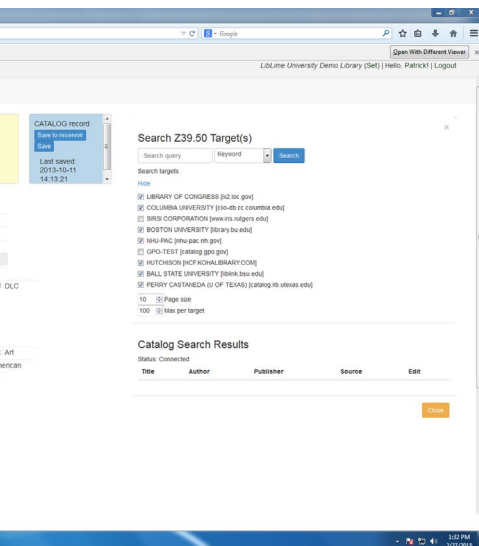
- Support for the MARC format for holdings
- Central ordering and distribution
- Multiple subscription support and flexible routing slips
- EDI claiming through acquisitions
- Irregular pattern prediction support
- Holds for specific issue support

Acquisitions

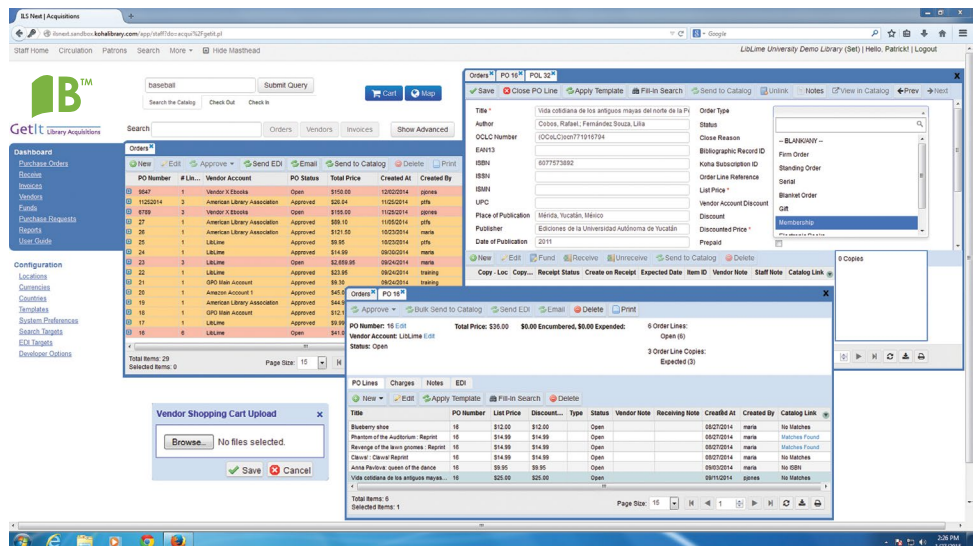
- Enhanced EDI support with EDI claiming
- Unlimited PO lines per PO and Purchase requests tracker
- Controlling and managing funds hierarchy
- Vendor shopping cart upload and Z39 searching
- Invoice rectification
- 'Send to catalog' feature for 'On Order' display
- Support for multi-FY funding with FY fund hierarchy auto-rollover
- Support for Firm Orders, Standing Orders, Blanket Orders, and Serial Orders

System Administration

- Discovery Layer Configuration Editor
- SQL query creator with Saved queries and Excel ODBC access
- Community sharing of reports
- Staff permissions (roles and individual accounts)
- Batch record export and batch patron import
- Label printing, message manager and email messaging support
- Z39 search target management
- System preferences controlling workflow functions
- Security - modification log viewer



cataloging editor



EDI compliant acquisitions ordering

LibLime-PTFS Services

PTFS-LibLime provides a number of essential services to libraries and librarians around the world. These services complement our Biblioovation LSP and the independent components that comprise that platform.



Consulting

- LibLime-PTFS librarians and technical business analysts partner with libraries to help define additional functionality for Biblioovation
- Comparative software analyses of Biblioovation functionality and proprietary ILS applications
- Design specifications for new open development functionality
- Design specifications for enhancing existing Biblioovation functionality

Development

- Perl, Java, Javascript, CGI, XSLT, and HTML programming expertise
- New functionality development
- Existing functionality enhancement
- Design specifications, release notes and user documentation services
- Feature design testing, feature regression testing and user testing

Implementation

- Installation (includes Debian OS, MySQL RDBMS, web server, Plack, Solr, and ILS application)
- Dedicated project managers
- System level configuration
- Module level configuration (permissions, policies, privileges, and import settings)
- Migration of data from legacy system – bibliographic, item, patron, authority, and circulation transaction records
- Union catalog creation
- Web-based training

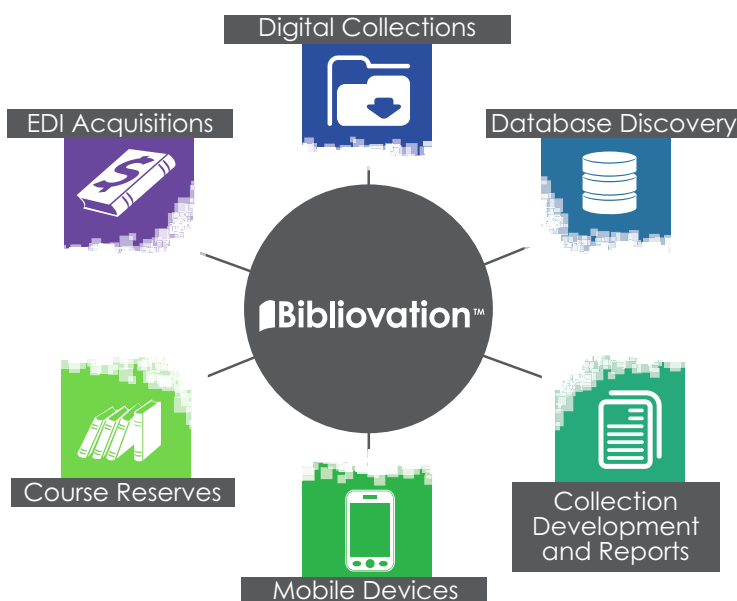
Consumer Support and Hosting

- Distributed computing hosting platform applies computing resources at point of need
- Customer support via customer web portal
- Daily full system backups and logical data backups every five hours
- Every site has a production, test and replica database for reporting

About LibLime-PTFS

LibLime, a division of PTFS, is the pioneer of web-based, cloud-hosted library management services. Our Library Services Platform, Biblioovation, combines traditional bibliographic management services along with support for GEOMARC, RDA, digital content searching, and visual retrieval. Working closely with our library customers, we are able to provide the most relevant technology tools in the Biblioovation platform – this is a solution built **By Librarians For Librarians**.

Get the Power.



Connect with us   

11501 Huff Court
North Bethesda, MD 20895
(301) 654-8088

www.liblime.com

 **Schedule 70**
Contract GS-35F-5322H

 **Schedule 36**
Contract GS-03F-0140W

 **LIBLIME**
Empowering Librarians